

TRENTON 7H013094

HO840003011538155

S-S-I STERLING TRENTON-ET TR TP TC TY TV TL TD HH1T HH2T HH3T HH4T HH5T HH6T

STERLING X ROBUST X PLANET

Born On: January 23, 2013

Beta-casein: A2A2 Kappa-casein: BB EFL: 8.5% aAa: 342561

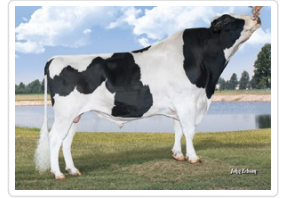
Sire: SANDY-VALLEY STERLING-ET

Dam: S-S-I ROBUST TULARE 7259-ET GP-84

4-02 3X 305D 14619 kgM 4.0% 578 kgF 3.2% 471 kgP

Daughter Average:

12512 kgM 529 kgF 4.20%F 411 kgP 3.30%P



Goff Trenton 51411



Brubaker Farms Trenton 6415-Grade



Palla Trenton 35782-Grade

INDEXES

TPI	2533
NM\$	772
CM\$	836
Feed Efficiency (\$)	185
DWP\$	875
WT\$	95
CW\$	5

PRODUCTION

PTA Milk (lbs)	266
PTA Protein (lbs)	45
PTA Protein (%)	0.14
PTA Fat (lbs)	80
PTA Fat (%)	0.26
Production Reliability %	99
Dtrs/Herds	1503/241

TYPE

PTA Type	1.40
Udder Composite	1.39
Feet & Leg Composite	0.83
Body Weight Composite	0.03
Dairy Composite	0.91
Type Reliability %	92
Dtrs/Herds	78/39

WELLNESS TRAITS

CDCB ZOETIS

Mastitis/Rel.%	0.6/78	104/64
Lameness/Rel.%		103/57
Retained Placenta/Rel.%		90/68
Ketosis/Rel.%	0.4/66	106/62
Metritis/Rel.%	0.4/71	99/67
Displaced Abomasum/Rel.%	0.2/68	103/59
Hypocalcemia/Milk	-0.3/54	
Fever/Rel. %		
Calf Respiratory/Rel. %		100/87
Calf Scours/Rel. %		105/89
Calf Livability/Rel. %		101/90

DAUGHTER FERTILITY

Fertility Index	1.0
DPR/Rel.%	0.0/94
HCR/Rel.%	2.8/92
CCR/Rel.%	2.7/93

SIRE FERTILITY

SCR/Rel %	-1.5/98
-----------	---------

MANAGEMENT TRAITS

SCE/Rel %	6.6/99
DCE/Rel.%	4.9/92
Gestation Length/Rel.%	-1.4/99
Early First Calving/Rel.%	3.4/85
SSB/Rel.%	6.8/97
DSB/Rel.%	4.9/94
Productive Life/Rel.%	6.6/89
Livability/Rel.%	3.3/77
SCS/Rel.%	2.76/98
Milking Speed/Rel.%	102/74

Stature	Short		-0.36	Tall
Strength	Frail		0.35	Strong
Body Depth	Shallow		0.12	Deep
Dairy Form	Tight Ribbed		0.89	Open Ribbed
Rump Width	Narrow		1.60	Wide
Rump Angle	High Pins		-1.36	Sloped
Rear Leg (side view)	Posty		1.54	Sickled
Rear Leg (rear view)	Hock-in		0.74	Straight
Foot Angle	Low Angle		0.03	Steep Angle
Feet & Leg Score	Low		0.73	High
Fore Udder	Loose		1.58	Strong
Rear Udder Height	Low		1.74	High
Rear Udder Width	Narrow		1.60	Wide
Udder Cleft	Weak		1.15	Strong
Udder Depth	Deep		0.60	Shallow
Front Teat Placement	Wide		1.88	Close
Rear Teat Placement	Wide		1.95	Close
Teat Length	Short		-2.13	Long